

# LED模组3系列路灯

## LED Street Light Module 3 Series



高导热系数铝基板作为灯珠载体，解决快速散热问题。

Aluminum PCB with high thermal conductivity as chip carrier for faster cooling

压铸壳体，散热性能好，外形简约美观。

Die-casting shell brings perfect heat dissipation, Simple & perfect appearance

高透光率透镜模组，有效控制不同的光束角度，光线均匀。

Lens module with high transparency could control different beam angles effectively and ensure balanced light.

优质的LED灯珠，确保产品的可靠性和一致性。

High-class LED chip to ensure good reliability and consistency



全部采用优质不锈钢紧固件

All adopt superior stainless steel nuts

IP66

CE

- ◆ 压铸铝制灯体，结构坚固，模组结构，产品功率延展性强。
- ◆ 光源使用Philips3030，PC透镜做二次配光，确保产品的可靠性和一致性好。
- ◆ 高效节能可按2-3倍功率替换金卤灯或者钠灯。
- ◆ 防护性能好，可在潮湿环境中使用。防护等级IP66。
- ◆ 电源性能好，可靠安全。
- ◆ 可按需求安装光控器。

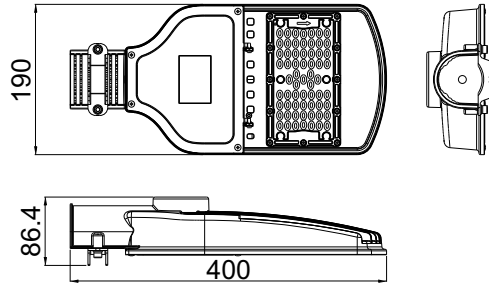
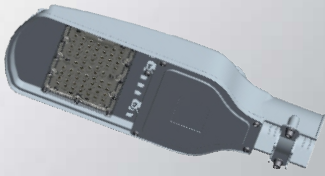
- ◆ Firm die-casting aluminum light body, module structure with variable power
- ◆ Aluminum profile structure with excellent heat dissipation
- ◆ Using famous brand LG chips to ensure good reliability and consistency
- ◆ Using PC lens to adjust beam angle
- ◆ Energy-efficient, about double to triple of the metal lamp or the sodium lamp
- ◆ Shell protection: IP66
- ◆ High quality driver, safety and reliable
- ◆ Option: 1) Motion sensor; 2) Photocell

灯具照片 Picture

尺寸图 Dimensions

产品重量和包装 Weight & package

20W-60W

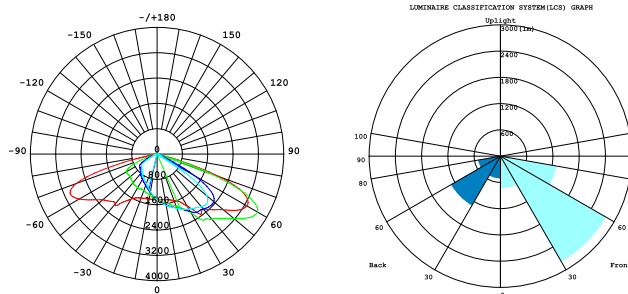
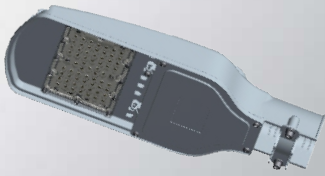


净重 N.W : 2KG  
 毛重 G.W : 2.4KG  
 包装尺寸 Package Size : 42\*21\*14cm  
 体积 Volume : 0.012m<sup>3</sup>

灯具颜色可以根据客户要求变更。  
 Fixture color could be customized.

灯具照片 Picture

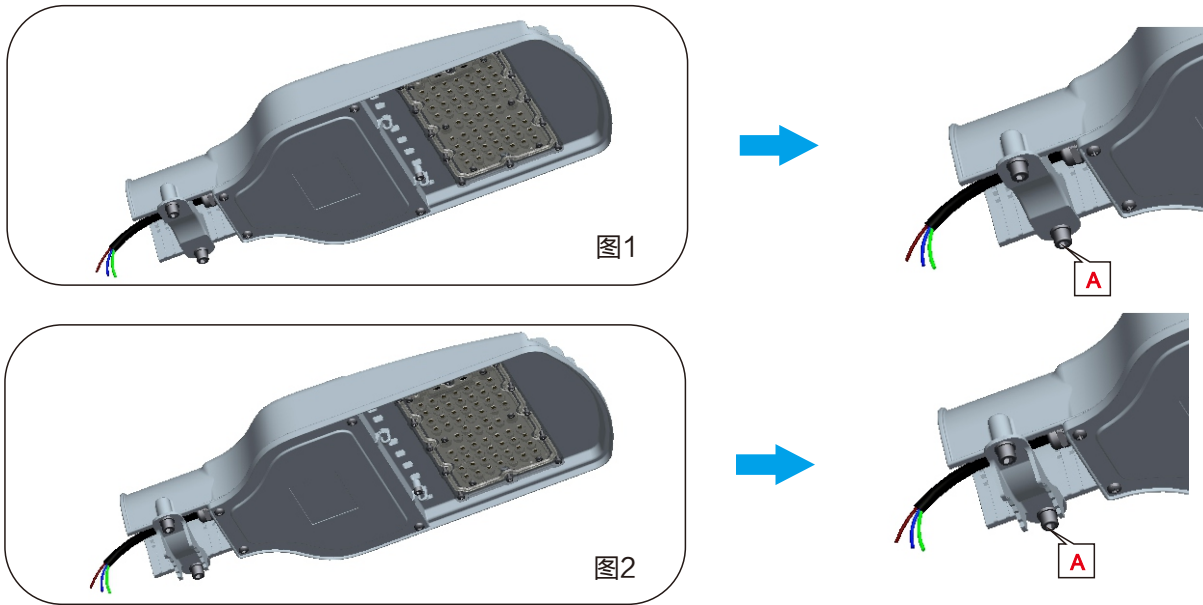
光学参数 Optics parameter



模组3路灯参数表 LED Street Light Module 3 Parameter table

Item description	LED MZ3LD20W001C	LED MZ3LD30W001C	LED MZ3LD40W001C	LED MZ3LD50W001C	LED MZ3LD60W001C
Input voltage/frequency [VAC][Hz]	100-277VAC 50/60Hz				
Input current [A]	0.07-0.2	0.1-0.3	0.13-0.4	0.16-0.5	0.2-0.6
Input watt [W]	20 ± 5%	30 ± 5%	40 ± 5%	50 ± 5%	60 ± 5%
Power factor	0.95@220V				
Voltage [V]	42				
Current(reference) [A]	0.39	0.63	0.83	1.07	1.28
Wattage(reference) [W]	16.5 ± 5%	26.5 ± 5%	35 ± 5%	45 ± 5%	54 ± 5%
Power efficiency	0.88				
Luminous flux [Lm]	2400	3600	4800	6000	7200
Colour temperature [K]	2700-6500				
Colour rendering index [Ra]	70				
Lumen maintenance(2000h)[%]	98				
Beam angle [H, V]	TYPE II				
Average life [h]	50000				
IP	IP66				
Ambient temperture	-25°C-40°C				
Driver	HLG-100-42A				
Material	ADC12+6063				
Storage environment	-40°C-85°C RH10%-95%				

## 安装示意图 Installation Diagram of LED Street Light Module 3



1.根据灯杆直径调整箭头A处支架方向，如果灯杆直径是42mm，支架方向如图1，如果灯杆直径是60mm,支架方向如图2，同时拧松A处2颗紧固螺栓。

2、将小路灯灯具引线按照标识标志与市电相接，确保电线接通，且接地良好。

3、把小路灯插入灯杆中，要注意保护好电缆线。

4、拧紧A处2颗紧固螺栓。

1. Adjust bracket that arrow A shows according to lamp-post diameter,if lamp-post diameter is 42mm,then the bracket direction should be adjusted like picture 1 shows; if lamp-post diameter is 60mm, then the bracket direction should be adjusted like picture 2 shows, and unscrew two fastening bolts of A simultaneously.

2. Connect the lead wire of street lamp with supply source according to identification signs, ensure the connection of wires and sound grounding.

3. Put the street lamp into lamp-post and pay attention to protect the cables.

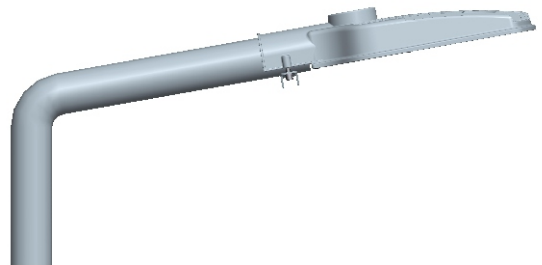
4. Screw up two fastening bolts of A.

### 注意事项:

1. 小路灯灯杆务必锁紧，以防止脱落或转动
2. 将裸露的电线进行良好的绝缘以防止短路
3. 黄绿线必须可靠接地，以防止漏电发生意外

### Notes:

1. Street lamp-post must be locked tightly, in order to prevent falling off or turning.
2. Insulate the bare cables, in order to prevent short circuit.
3. Yellow green line must connect the ground stably, in order to prevent electric leakage.



UNIVERSELITE CO., LTD.  
KUAIJI CUN INDUSTRIAL ZONE, PINGSHUI TOWN, SHAOXING COUNTY,  
ZHEJIANG PROVINCE, CHINA ZIP : 312051  
Tel : 86-575-85739999  
Fax : 86-575-85749999  
Email: [info@universelite.com](mailto:info@universelite.com)  
Website: [www.universelite.com](http://www.universelite.com)

浙江宇光照明科技有限公司  
地址：浙江省绍兴县平水镇会稽村工业集聚区  
电话：86-575-85739999  
传真：86-575-85749999  
邮箱：[info@universelite.com](mailto:info@universelite.com)  
网址：[www.uvlte.com](http://www.uvlte.com)